

October 2007 BNA Newsletter

Bohls

Neighborhood Association

P.O. Box 2484, Pflugerville, TX 78691

email: bohls2003@yahoo.com

website: www.bohlsnews.org

Letter from the President

Sally Gannaway, BNA President

Fall is also a great time to plant and prune trees. April Rose, City of Pflugerville Urban Forester, has provided us a wonderful article in this newsletter about pruning your trees. April has also coordinated a tree planting as part of the Bohls Neighborhood Adopt-a-Trail clean-up day (Saturday, January 5th, 8:30 a.m. with rain date Saturday, January 12th). Come out and help us with our Adopt-a-Trail clean up and help plant trees donated to beautify the hike and bike trail.

The Bohls Neighborhood Fall food and toy drive will benefit the Pflugerville Police Department's **Blue Santa** program this year. Pickup for the food/toy drive will be Saturday, November 10th at noon. We are looking for volunteers to help us deliver donation bags the week of November 5th. If you have an hour to help deliver bags please contact us at Bohls2003@yahoo.com. Look for the article later in this newsletter about **Blue Santa**.

Thanks to our great volunteers. We have a wonderful core group of people that help the neighborhood association and we thank them whole-heartedly. The neighborhood association is made up completely of volunteers. Any time you can donate to help the neighborhood would be greatly appreciated!

Our Travis County Commissioner (Precinct 2) is Sarah Eckhardt. I have recently contacted her office via email (sarah.eckhardt@co.travis.tx.us) about roads and other county issues. Her office is VERY helpful and quick to respond.

Have you seen the **new City of Pflugerville website** at www.cityofpflugerville.com? It is full of information about our city including meetings, ordinances, department contacts and more. I recommend that you check it out regularly.

Speaking of Pflugerville, the new T-shirts are GREAT! The new, already infamous "**Pflugerville, Texas ...between a rock and a weird place!**" t-shirts are available for purchase! To get yours, drop by City Hall, 100 East Main Street, Ste. 100, Monday through Friday, 8:00 a.m. to 5:00 p.m. Youth sizes (XS-L) are \$10.00, adult sizes (S-XXXL) are \$15.00, and both are available in blue and gray. Proceeds go towards improvements at Lake Pflugerville.

Solicitors often come to our homes trying to sell merchandise. Did you know that solicitors are required to have a permit issued by the Pflugerville Police Department to sell door-to-door in Pflugerville? If a solicitor comes to your door they must show you their permit if you ask. If the solicitor does not have a permit or is acting suspicious call the Pflugerville Police non-emergency number (251-4004) or 911 and give a description of the person and location. The police will follow-up. This permit does not apply to schoolchildren selling items for school fundraisers.

Fall is here and hopefully cooler weather! After all the rain this year, many houses in our neighborhood need to be painted. Paint provides a protective barrier from the weather for your home. **Fall is a great time to paint your house!**

JOIN THE BOHLS NEIGHBORHOOD ASSOCIATION (BNA)

June began a new fiscal year for the Bohls Neighborhood Association. We continue to have our annual membership drive and encourage all households to join. Membership is voluntary. Last fiscal year we had twenty (20) paid member households out of over 500 homes. Thank you to the residents that have joined the neighborhood association this year!

Your voluntary annual dues are used for neighborhood activities and communication, promoting neighborhood safety and beautification, maintaining Bohls signage, and helping to maintain the value of our homes by supporting the Architectural Committees' enforcement of the deed restrictions.

Over half the budget approved at the annual meeting for BNA for this fiscal year is for the architectural committees' enforcement of the deed restrictions; membership dues are an crucial income source for this funding. We hope you will join BNA this year!

We are currently signing up for June 1, 2007 - May 31, 2008 BNA membership. Voluntary dues are \$30/yr per household. If you are interested in joining contact BNA at email address bohls2003@yahoo.com or mail your dues to Bohls Neighborhood Association, P.O. Box 2484, Pflugerville, TX 78691.



BOHLS NEIGHBORHOOD ASSOCIATION NATIONAL NIGHT OUT 2007



Our 2007 annual National Night Out gathering was again successful. This was our fourth at Heritage Park's Scott B. Mentzer Pool where we gathered to meet with our new and old neighbors. This event will surely result in a safer neighborhood. There were approximately 250 Bohls' residents and other community members that participated in the event on the evening of August 7.

Thanks to all who volunteered, brought side dishes, and attended. The food was plentiful and tasted great

A special thanks to our sponsors and volunteers who helped fund and organize what we feel it the best National Night Out Party in Pflugerville and maybe even Texas. The sponsors and volunteers were:

Pflugerville Parks & Recreations Department
-Especially Glen Holzer, Katie Berkes and the lifeguards

Pflugerville Police Department
-Especially Officer Mike Clowdus

Chase Bank

HEB location— FM685 & Pecan

Wendy's
-Jim Kerr, Manager—Far West location

Lynette Davis & Family

Craig & Shirl Enoch

Vicki Di Benedetto

James & Janice Ferguson

Michael & Sally Gannaway

Dwight Phillips & Family

Willie & Carolyn Watts

Becky Berryhill

For those of you, who attended, please start telling your neighbors who did not attend about our neighborhood's annual event to help make our community a safer place to live. National Night Out occurs on the first Tuesday of August each year to provide a nation-wide event for neighbors to meet each other. Knowing your neighbors is the foundation for the Neighborhood Watch Program. If you would like more information about Neighborhood Watch, contact Willie Watts at 670-1447 or WillieWatts@earthlink.net.



LOST OR STRAY PETS

To report stray or lost pets call the police non-emergency number 251-4004.

HAVE A SAFE HALLOWEEN

Halloween may be a fun holiday for kids, but for parents, trick-or-treat time can be a little troublesome. Concerns about child safety – whether they are out in the neighborhood or back at home with bountiful bags of goodies – can cast a spell on the evening's festivities. But not to worry! Following a few safety tips will help ensure that Halloween, will be a “howling” good time.

MAKE SURE THE COSTUMES ARE SAFE

- Check that costumes are flame-retardant so the little ones aren't in danger near candles.
- Keep costumes short to prevent trips and falls.
- Try make-up instead of a mask. Masks can obstruct a child's vision – a dangerous thing when they are crossing streets or going up and down stairs. If a mask is worn, make the eyeholes larger for better visibility.
- Make sure your kids wear light colors or put reflective tape on their costumes.
- Avoid hard plastic or wood props such as daggers or swords. Substitute with foam rubber which is soft and flexible.

GOING OUT TRICK-OR-TREATING

- Younger children should be accompanied by an adult. The older kids should be with adults or other friends. No one should go trick-or-treating alone.
- Remind kids not to enter a strange house or car.
- Watch out for cars and carry a flashlight to help see and be seen.
- Set a time limit for children to trick-or-treat. Remind them not to take short cuts through backyards, alleys, or playing fields.
- Do not approach houses with the lights off.
- Stay within the neighborhood and only visit homes you know.

EATING THE TREATS

- Remind the kids not to eat any treats until they get home.
- Check out all treats at home in a well-lighted place.
- What to eat? Only unopened candies and other treats that are in original wrappers. Be sure to inspect fruit and homemade goodies and if you find anything suspicious, call the Pflugerville Police (251-4004 or 911).

Parents and kids can avoid trick-or-treating troubles entirely by organizing a Halloween costume party with treats, games, contests, music, scary stories, and much more. Make your Halloween party the place to be for your child and his/her friends!

No matter how you celebrate, have a safe and happy Halloween and be smart – think safety!

If you have any questions or concerns, please contact:

Pflugerville Police Dept.
Crime Prevention Unit
Cpl. Mike Clowdus, CCPS
670-5512

Bohls Neighborhood 2008 Adopt-a-Trail Clean up and Tree Planting

Did you know that the Bohls Neighborhood Association was the first neighborhood to adopt-a-trail in Pflugerville? Our section of the trail is adjacent to Old Hutto Road between East Pecan and FM 685.

As adopt-a-trail participants we are asked to help clean litter from the trail and to call the Pflugerville Parks and Recreation Department if we see anything that needs their attention (e.g. trees growing too low over the trail, safety issues, graffiti, empty pet-bag dispensers, etc.).

We are also asked to have trail clean-up days twice a year: one on Keep Pflugerville Beautiful's dumpster day and the other on a date of our choosing. We have always held our clean up day on the first Saturday in January with a rain date of the second Saturday. This date was chosen because it allows us to partner with Parks and Recreation employees to prune the landscaping along the trail in addition to picking up litter. It is also a great time to work off those pesky holiday cookies.

**Our next clean up date is Saturday, January 5th, 2008 at 8:30 a.m.
(Rain date Saturday, January 12th)**

This year we have a great opportunity. April Rose, City of Pflugerville Urban Forester has obtained a grant to plant trees along our section of the trail. April has chosen the types of trees to be planted and their specific locations. She has also arranged for additional volunteers to come help us plant the trees. City employees will use equipment to help dig the holes. If you have ever wanted to learn the right way to plant a tree, this is your

opportunity to practice with a professional. We hope you will come out and volunteer. Let's all work together to make our hike and bike trail beautiful!

Be sure to read April's informative article on tree pruning.



Pruning Guidance from the City of Pflugerville's Forester

By April Rose, City of Pflugerville, Urban Forester

Kim Coder, an extension forester in Georgia and pruning guru said "Pruning can be one of the most beneficial or one of the most detrimental maintenance practices for a tree. If done correctly, pruning can lengthen a tree's life, increase its value to the landscape, and minimize liability problems for its owner. Improper pruning can cause structural and biological problems leading to decreased tree life, pest and decay problems, liability problems and a number of other significant problems that decrease tree values."

The pruning and planting season is approaching. Below are several factors to consider when pruning in order to maximize the potential of your landscape tree:

1. Species- What is the normal branching pattern for a given species? Live oaks grow very broad and may not form distinctive central leaders (main stems). Shumard oaks and most other hardwood, deciduous species have a distinctive central leader that can be identified at a very young age and favored during early branch training.
2. Time of Year- Generally the best time of year to prune is when the tree is dormant (late fall to late winter). Oaks susceptible to the oak wilt fungus (Spanish, red, Shumard, chinkapin and others) should never be pruned when the beetle that carries the oak wilt fungus is active: generally between Valentine's Day and Father's Day. Ornamental trees valued for their flowers that bloom in the early spring on previous season's growth (such as redbud) should be pruned just after flowering. Trees that flower on the current season's growth (crepe myrtle) should be pruned when the tree is dormant.
3. Training- usually a little selective training will help a tree develop its best form. When you decide to wield your pruners, remember that with pruning: less is more. Take your time, pruning should be done a little at a time so as not to stress the tree.
 - a. Remove dead, broken, diseased limbs first
 - b. Identify a central leader (the main stem that appears the most upright and vigorous) then don't touch it! Cutting the top to promote lateral branching is not recommended. Reduce (cut back) any limbs that appear to be competing with the central leader.
 - c. Identify the lowest permanent branch. Consider how much clearance you will need. Look for a branch roughly 1/3 the size of the main stem, with a wide angle of attachment.

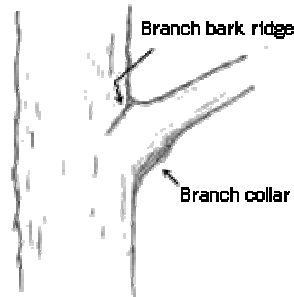
Good angle of attachment:



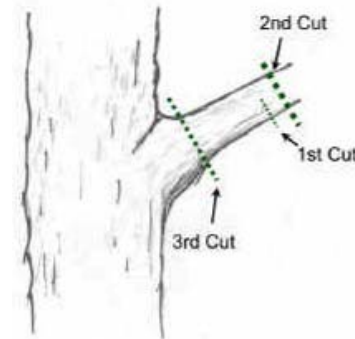
Angle of attachment too narrow:



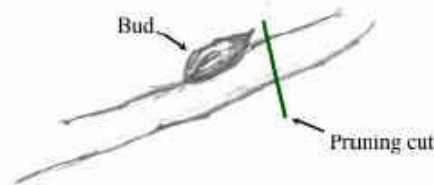
- d. Identify scaffold branches. These are your main lateral limbs. Ideally these should be spaced about 1 foot apart, spaced radially around the trunk, and about 1/3 the size of the main stem with a wide angle of attachment
 - e. Identify temporary branches to leave in place for a year or two that will contribute to growth, developing trunk taper and carbohydrate reserves.
4. Make proper pruning cuts: don't make flush cuts or leave stubs. Cut outside the branch collar (the area of slightly raised trunk tissue that surrounds a branch where it attaches to the main stem). The branch collar forms the "donut" like callus tissue around a wound that help seal it off from insects, fungus, and decay organisms.



5. When pruning limbs with a saw, use the 3 step method to prevent bark from peeling down the trunk:



6. When pruning small twigs, cut just beyond a bud:



- 7. Tools: use bypass pruners, not anvil type. The anvil type crushes tissue.
- 8. Wound dressings are not recommended. A healthy young tree has its own defense mechanisms. Chemicals come to the surface to plug the exposed vascular tissue. Applying a wound dressing could impede that process or trap moisture beneath that could promote the growth of fungus and decay organisms. I only apply a wound dressing if I have to prune an oak wilt susceptible species between Valentine's Day and Father's Day.
- 9. Never top or hedge trees (as often seen on crepe myrtles). It destroys the natural architecture and is very stressful to the tree because it completely removes its food factory (leaves) requiring it to depend solely on stored carbohydrates, which are normally reserved for defense. Also, new growth is weakly attached sprouts.

and references for certified arborists in your area. I encourage every homeowner to develop a relationship with a certified arborist. Your landscape trees are an investment in your quality of life and property. A certified arborist will help you maximize that investment.

IMPORTANT INFORMATION

The Bohls Crossing Architectural Committee and the Bohls Place Architectural Committee are separate entities from the Bohls Neighborhood Association. The Bohls Neighborhood Association forwards communications to the appropriate architectural committee as a service to our neighbors. The architectural committees, not the neighborhood association, enforce deed restrictions. Sample copies of the deed restrictions are on the BNA website www.bohlsnews.org. Official copies of the deed restrictions for your section of the neighborhood are available at the Travis County Clerks office. Their Travis County Clerk's website is <http://www.co.travis.tx.us/>.

P.O. Box 2484, Pflugerville, TX 78691 is the address used by Bohls Neighborhood Association, Bohls Place Architectural Committee and Bohls Crossing Architectural Committee. You may also contact any of these groups by emailing bohls2003@yahoo.com. Your email will be forwarded to the appropriate architecture committee.

ROAD PROJECTS CONTINUE

Widening of East Pecan

The southbound (new) lanes will be constructed first with traffic continuing to use the existing road. Once the new lanes are completed, traffic from the existing road will be rerouted to the new lanes and the old road will be replaced. The plans have a left turn into Plumbago when you are traveling east on Pecan from Immanuel but no left turn into Sunflower. Due to the left turn at Immanuel when you are traveling west on Pecan, there was not sufficient space per highway safety rules to provide a left turn lane at Sunflower when traveling east. East Pecan will be 4 lanes from Dessau to the future Pfennig Lane intersection, east of Bohls Crossing. East Pecan will be 6 lanes from the future Pfennig Lane intersection to SH 130.

East Pecan will be widened from Dessau to SH 130 as one project. The City and County have teamed together to construct this project. The only remaining utility relocations are gas lines. Atmos is currently conducting these relocations, and they should last for another month or two. Construction bids to widen East Pecan will be opened on October 17, 2007. This will most likely translate to construction starting in December 2007 or January 2008. Thanks to Joe Carpenter, City of Pflugerville Engineer, for providing us with this information.

Wells Branch Parkway / Heatherwilde Boulevard

The City of Pflugerville Wells Branch Parkway projects, from Tudor House Drive to Dessau and Dessau to Immanuel have both been completed.

The remaining portion of the Wells Branch Parkway project, from Tudor House Drive west to east of I-35 and the Heatherwilde Boulevard extension project from Wells Branch Parkway south to Howard Drive have been combined and are a joint project between Travis County and the City of Austin.

Per the office of our Travis County Commissioner Sarah Eckhardt, the Travis County consultant is resolving design issues with the City of Austin review staff and Travis County is expecting to get the project out for bids late this year (2007). Construction is expected to start early next year (2008) and will take 15-18 months to complete. Thanks to Loretta Farb, Executive Assistant to Commissioner Sarah Eckhardt, Travis County, Precinct 2 for providing us with this information.

Travis County Projects

Go to http://www.co.travis.tx.us/tnr/publicworks/pdfs/cip_summary.pdf for more information on Travis County road projects.



PFLUGERVILLE BLUE SANTA

Blue Santa is a joint effort of the Pflugerville Police Department and the citizens of Pflugerville. The project is aimed at providing Christmas for the less fortunate families of Pflugerville.

The project began several years ago and continues to grow each year. Many lives have been touched because of this program.

Although the program is coordinated by the Pflugerville Police Department, nearly all of the sorting, wrapping, packaging and deliveries are done by volunteers who come from Pflugerville businesses, volunteer organizations and the Pflugerville community.

Blue Santa normally begins its operation the week after Thanksgiving and deliveries are made the weekend prior to Christmas. Deliveries are made by Pflugerville Police Officers and volunteers. Deliveries consist of toys for the children and a complete Christmas dinner for the family.

Blue Santa accepts donations of new toys, non-perishable food items and money. Every year we fall short of gifts for the older kids, 10 to 14 years of age and infants to 2 years of age. Please think of them as well when you look for things to give this year.

We at Blue Santa want to say THANK YOU for all of your support. Without you we couldn't exist and a lot of Pflugerville kids would not have much of a Christmas.

THANK YOU *and* MERRY CHRISTMAS

For further information contact:

Cpl. Mike Clowdus

(512) 670-5512 or

E-mail mclowdus@cityofpflugerville.com.

The Bohls Neighborhood Fall Food & Toy Drive will benefit **Blue Santa** this year. We will be collecting food and toys on Saturday, November 10th at noon. Should you choose to donate money or volunteer with **Blue Santa**, please contact Cpl. Mike Clowdus directly.



Christmas Trail of Lights

The Bohls Neighborhood Association will once again be judging Christmas yard decorations/lights. We will be recognizing one first, second, and third place as well as possible honorable mention winners with yard signs, but no prizes will be given. A resident that has won any combination of first, second, and third place for two consecutive years is not eligible to win any of the three positions a third consecutive year. The resident is eligible to win an honorable mention for the current year and any place award the following year.

The judging will take place Wednesday, Dec. 12th starting at 6:30 p.m.

Bohls Neighborhood Association Officers

Sally Gannaway	President
Willie Watts	Vice-President
Shirl Enoch	Secretary

MOST COMMON DEED RESTRICTION VIOLATIONS

The volunteers from Bohls architectural committees report the most common deed restriction violations are currently: **trailers and boats in driveways**. These are only allowed to stay in driveways for less than 48 hours. Keeping these in your driveways or in front of your home will result in a letter from the Architectural Committee and possible legal action. To see an example of the Deed Restrictions go to www.bohlsnews.org.

MARK YOUR CALENDAR



- Nov 4-9 BNA volunteers deliver Food & Toy drive bags
- Nov 10 Food & Toy Drive for Blue Santa. Pick-up noon
- Nov 17 Pfall Pfest Arts & Crafts Show, Pflugerville Recreation Center 9am – 4pm
- Dec 8 Town Holiday Stroll and Christmas Parade Downtown Pflugerville 10am – 8pm
- Dec 12 BNA Christmas Light Judging 6:30 p.m.
- Dec 14 Holidays at Heritage Park in the Red Barn on Old Hutto 6pm – 9pm
- Jan 5 BNA Adopt A Trail Clean-Up & Tree Planting Day 8:30 a.m.. To volunteer contact bohls2003@yahoo.com.
- Jan 12 BNA Adopt A Trail Clean-Up & Tree Planting Day 8:30 a.m.(Rain Date)

THANK YOU TO OUR ADVERTISERS!

	<p>GILMORE JORDAN AND ASSOCIATES REAL ESTATE SERVICES</p>		<p>Pam Hill Realtor Associate Cell Phone: (512) 796-7908 Fax: (512) 579-4229 pamaustinhomes@yahoo.com http://pamhill.yourkwagent.com 101 East Old Settlers Blvd. Suite 190 Round Rock, TX 78664</p> <p>EACH OFFICE INDIVIDUALLY OWNED AND OPERATED</p>
	<p>WILLIE WATTS REALTOR® 512.799.4089</p> <p>Fax: 512.990.7768 ■ 866.889.0894 PO Box 26084 Austin, TX 78755 Willie@GilmoreJordan.com ■ www.GilmoreJordan.com</p>		

Bohls Neighborhood Association (BNA) will only accept advertisements for BNA neighborhood communications from businesses. Advertising a business in a BNA neighborhood communication does not imply endorsement of that business by BNA. BNA reserves the right to refuse to accept any advertisement. Political or religious advertisements will not be accepted.